

# ultraframe

Transforming light and space



Window & Door Products

Orangery Products

Home Extension Products

Conservatory Products

Skylight Products

# Orangery

System Guide

Version 2.0 | Sept 2012



For those who want light and space but with a difference, then the Orangery range from Ultraframe is it.



ultraframe  
*Orangery*

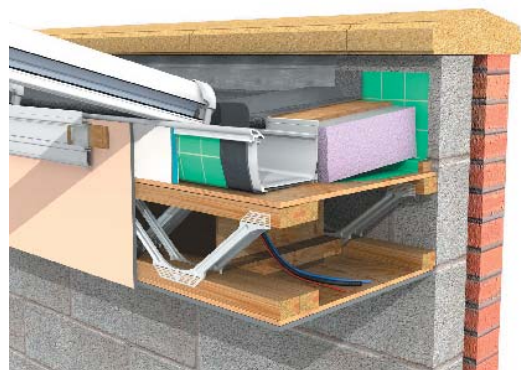
**The Orangery is a new take on the traditional atrium-style conservatory, brought up to date with the very latest technology from Ultraframe.**

This stunning building floods the adjoining rooms with light, whilst the interior height of the Orangery creates a feeling of grandeur that is sure to appeal to the discerning homeowner.

The Ultraframe Orangery features a flat roof around the perimeter offering a range of features and benefits.

Alternatively, for any design that is 'non-standard', we can offer a full bespoke design service along with structural calculations. Typically, it may take up to 7 days to quote, and a further 14 days for calculations to be provided by our structural engineers. (Please note there is a service charge for these structural calculations).

Whichever option is chosen, rest assured that the Ultraframe team will help you throughout the process.



Help your customer stand out from the crowd...  
choose an Ultraframe Orangery.



## PRODUCT OVERVIEW



- Uses proven building components including the Ultraframe BBA roof
- Comprehensive structural calculations available (and chargeable).
- The package includes the complete structure above lintel height - which can be installed in under 2 days
- 'Natural' finish aluminium sheet flat roof covering is a purpose designed dry fit system
- Flat roof deck provides a traditional appearance.

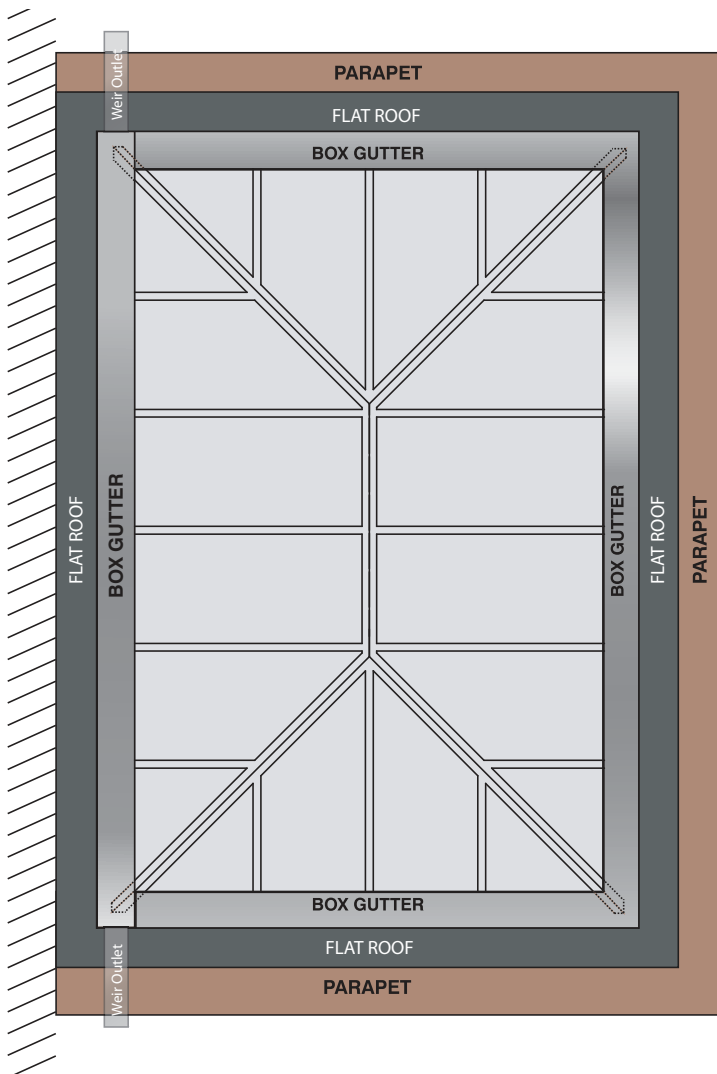
**Ultraframe offers a distinct and structurally superior option – however, beware of cheap imitations. Consider these points before choosing;**

- Is support required from the host wall – can this support be structurally proven?
- Are structural calcs available - do they include lateral support?
- Do standard details exist or are you left to 'invent' them yourselves as you go along?
- Common default get out position of 'side frames/walls provide lateral support' is not applicable without additional structural components
- Beware designs where the roof sits on brick piers – the support is insufficient.

**Note of caution: Successful Orangery construction should include an integrated approach to both vertical and lateral (racking) support for the entire structure, Many designs offer little more than a flat roof with no thought given to the restraint of window frames or slim masonry columns, which have limited strength.**

# TECHNICAL SPECIFICATION

**LEAD TIME  
20 WORKING  
DAYS**  
(from signed order  
confirmation)



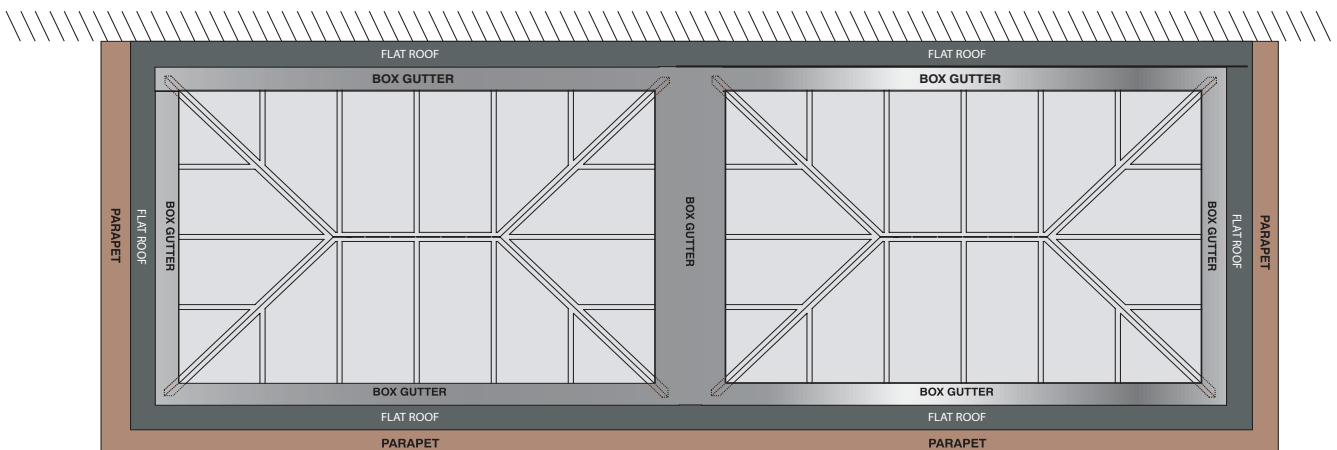
## Standard Specification: (Upgrade options are available)

- Classic roof - Classic Plus and shades are options
- Roof includes 265mm insulated box gutter all round with bolted stop end joints
- Two hipped ends included
- Package also includes
  - Pre-fabricated structural deck system
  - Insulation panels cut to size to achieve 0.25 'U' value
  - 'Natural' finish aluminium flat roof covering
  - All structural straps and fixings
  - Vapour barrier
- Roof is supplied unglazed - recommendation is self cleaning glass. Ask for details
- Typical roof pitch is 25° - actual pitch dependent upon width/projection
- Chambered glazing bar top caps - all suite options available
- Decorative glazing bar undercladding
- White - with a choice of other finishes/colours to choose from.
- Orangery ball finial/ low profile cresting (other choices available)
- Eavesflow included
- Ultraselect Tapestry included (other choices available)
- A minimum of 2 outlets are provided - PVC hoppers and rain water pipes are supplied
- Option - Lantern side frames can be used

### IMPORTANT NOTE

**1.** There is a maximum internal brickwork size which can vary depending upon several factors. Ridge can be parallel to the host wall or at a right angle to it. For sizes bigger than the maximum, the glazed roof will be split into two (or more mini roofs) shown below.

**2.** Additional insulation to that which you would normally provide to a standard conservatory is probably required to the cavity wall and base/slab when compared to traditional conservatory bases.



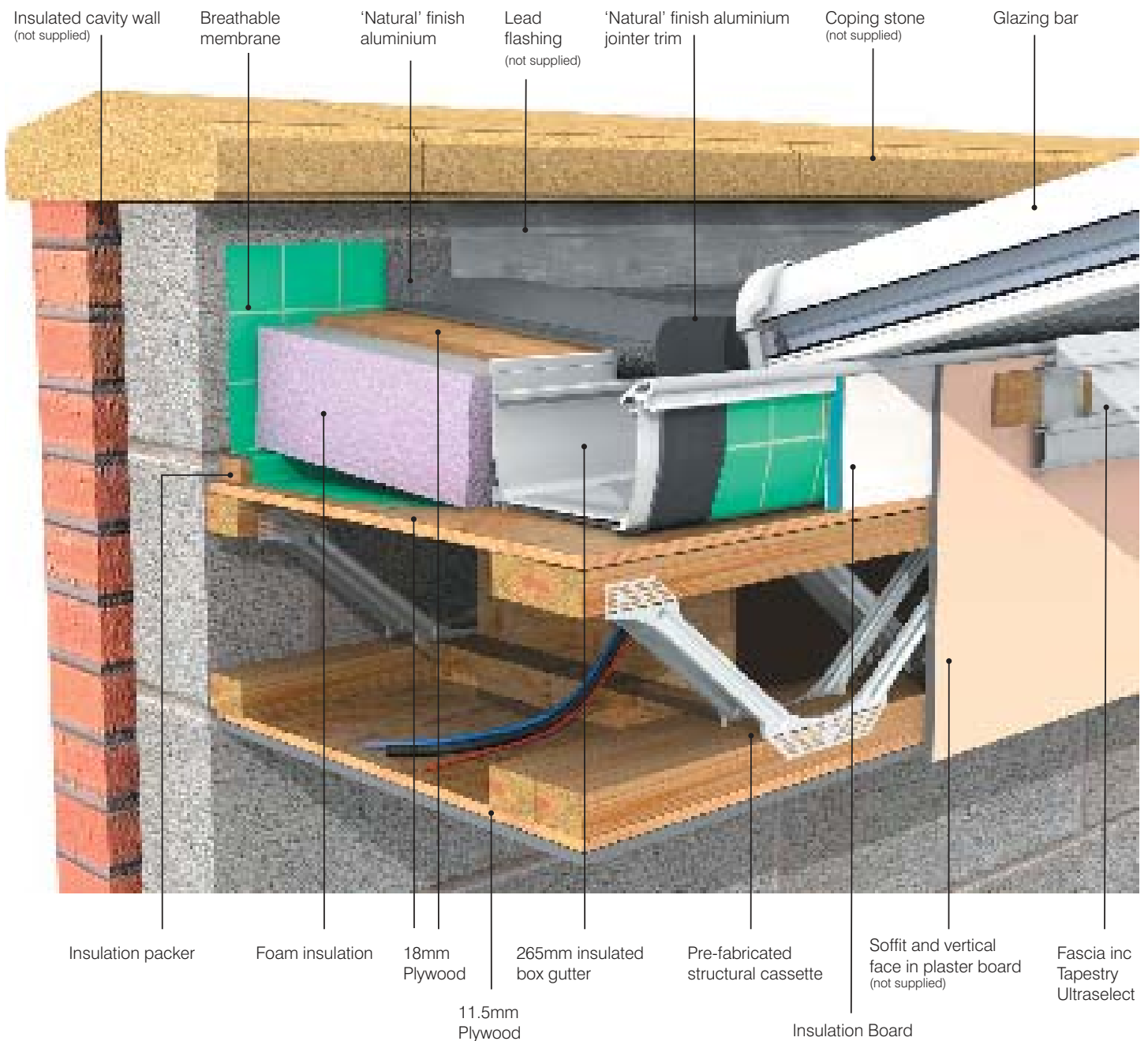
**Please call 0843 208 6953 to discuss your requirements.**

# TECHNICAL SPECIFICATION

Example construction details (exact details to be confirmed by calculations).

- Parapet walls required on all elevations except host wall, minimum of 7 brick course or 500mm above lintel height excluding copings
- Typical minimum pillar widths are:-
  - Corners 2 x 2 bricks (450mm x 450mm)
  - Intermediate 1 1/2 bricks (340mm)
  - Minimum combined pillar width - 25% of each side length.
- Structural deck to sit at lintel height or 1 course above, manufactured with 5mm fitting tolerance on all sides.
- Box gutter outlet centres to be 380mm from face of host wall, unless otherwise requested.
- Please allow 7mm fitting tolerance between frame tops and lintels.
- Internal blocks to be 3.5kN load bearing.

## Cross Section (Not to scale)



Please complete both pages and fax back to 0843 208 6945

# Ultraframe Orangery

## Roof order/enquiry form Flat Roof Perimeter

Account No.

Company Name ..... Delivery Address .....

Company Contact .....

Telephone No. ....

Fax No. .... Order Reference No. ....

### ORANGERY STD ROOF SPECIFICATION

- Ultraselect Tapestry - other designs available if change required.
- 265mm insulated box gutter (supplied in 2 or four bolted sections) with 2 welded outlets.
- Welded outlets - 120 x 80
- Prefabricated structural desk system including all fixings
- Hoppers, square RWP - same colour as roof unless stated different.

### DECK COVER

- Aluminium  
 GRP

### ROOF COLOUR

#### INTERNAL

- White     Deeplas     Light Oak     Rosewood  
 Painted onto unfoiled roofs  
Paint colour eg. RAL .....

#### EXTERNAL

- White     Deeplas     Light Oak     Rosewood  
 Painted onto unfoiled roofs  
Paint colour eg. RAL .....

### GLAZING OPTIONS

#### GLASS

**ANTI SUN (1.2)**  
**A1 (Blue) A2 (Grey)**  
   

**ANTI SUN (1.5)**  
**B1 (Blue) B2 (Grey)**  
   

**CLEAR**  
**C1 (1.2) C2 (1.5)**  
   

**CONSERVAGLASS**  
Subtle Blue    Neutral Clear  
      
**NOTE: MS POLYMER SEALANT MUST BE USED**

#### UNGLAZED Glazing supplied by others

Poly 25mm    Glass 24mm  
   

#### ROTABOND SEALANT (MS POLYMER)

White (NCGS001/W)    Black (NCGS001/B)  
 .....     .....  
No. of tubes    No. of tubes

#### SPACER BAR COLOUR

Silver    Bronze    Gold    White  
              
Default

#### ROOF VENT OPTIONS

Ali Vent     Brass     Electrical Switch  
 PVC     Chrome     Rain Sensor/Stat

### CONSTRUCTION DETAILS

#### Overall Cavity Wall

Width ..... mm

Cavity Width \* ..... mm

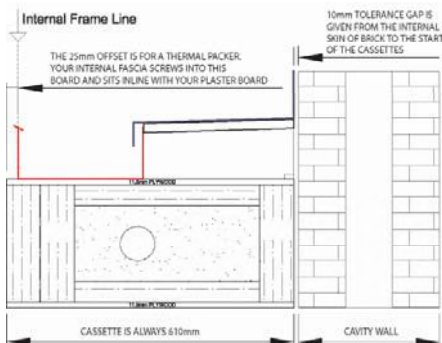
#### Deck Position

At Lintel Height

1 course (76mm above lintel)

2 course (150mm above lintel)

\* Additional cavity width is needed to accommodate enhanced insulation



Parapet walls required on all elevations except host wall, inimum of 7 brick course or 500mm above lintel height excluding copings.

Minimum pillar widths are :-

- Corners 2 x 2 bricks (450mm x 450mm)
- Intermediate 1 1/2 bricks (340mm)

Minimum combined pillar width - 25% of each side length.

Structural deck to sit at lintel height or 1 course above, manufactured with 10mm fitting tolerance on all sides.

Please allow 7mm fitting tolerance between frame tops and lintels.

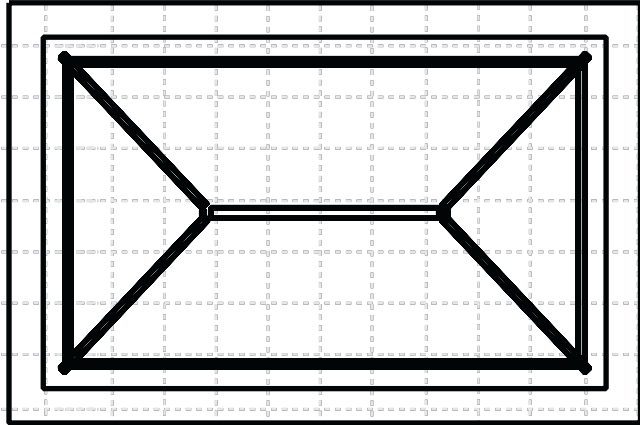
Internal blocks to be 3.5kN load bearing.

Mark two outlet positions with **X**

**PLEASE SIGN BELOW & FAX BACK TO 0843 208 6945**

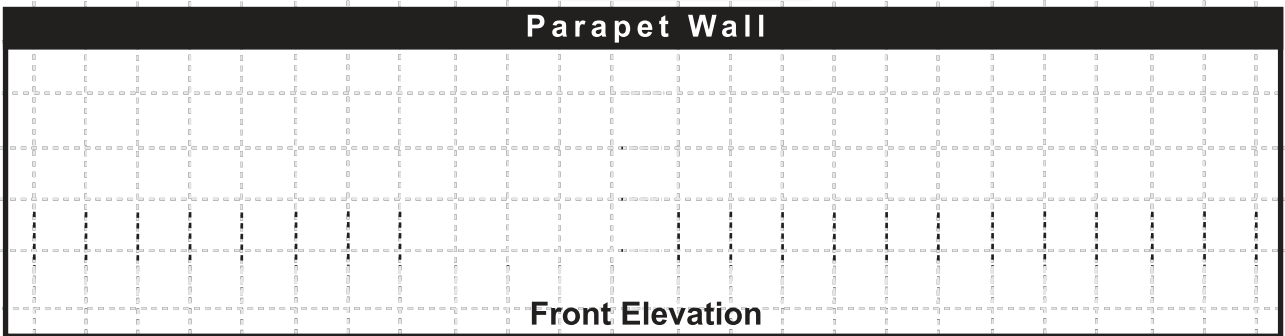
DATE .....

Please indicate house wall(s) on this drawing



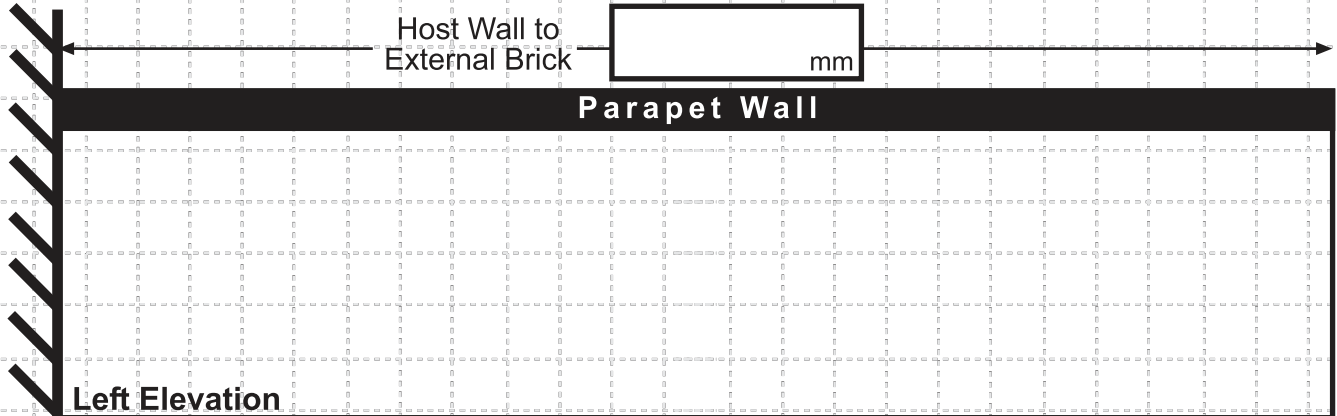
Please Supply Dimensions of Brickwork and Draw in your Window/ Door Openings

External Brick to  
External Brick

 mm

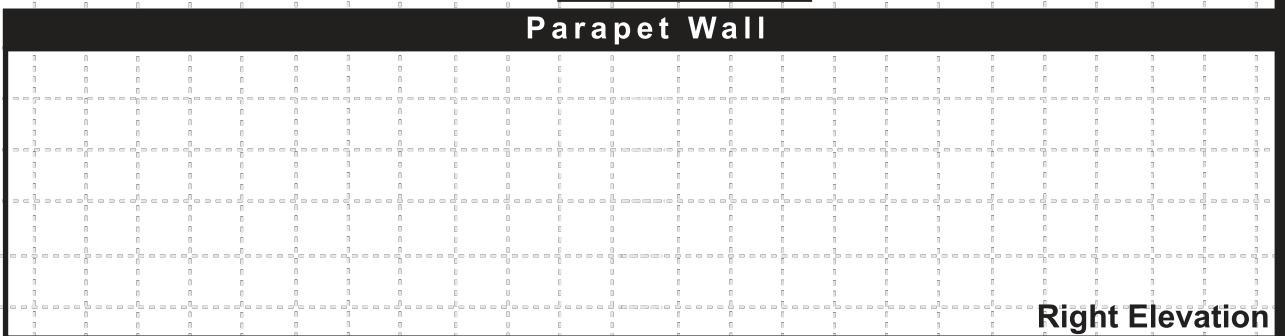
Front Elevation

Host Wall to  
External Brick

 mm

Left Elevation

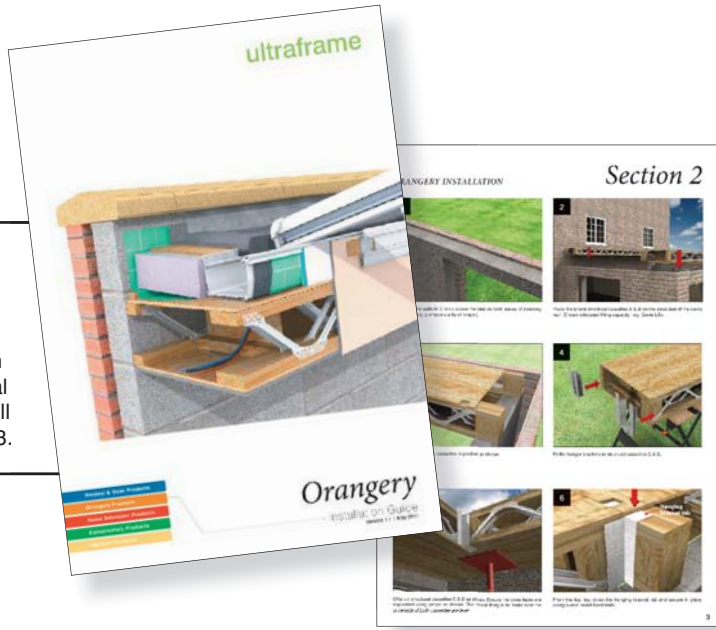
External Brick to  
Host Wall

 mm

Right Elevation



Ultraframe's Orangery roof comes with a comprehensive step by step installation guide to ensure 'right first time' fitting. For further information on specification or technical support please call 0843 208 6953.



# ultraframe

Transforming light and space

[www.ultraframe.co.uk](http://www.ultraframe.co.uk)

Ultraframe (UK) Ltd, Salthill Road, Clitheroe, Lancashire. BB7 1PE